



Food and Agriculture
Organization of the
United Nations

Proposing new compounds and additional pesticide/ commodity combinations to establish Codex Maximum Residue Limits

A practical handbook



Introduction

For over sixty years, the Codex Alimentarius Commission (CAC) has been developing international food standards to protect consumers' health while facilitating fair practices in international trade.¹

Codex standards are developed in accordance with the **Codex risk analysis framework**, as outlined in Section IV of the Procedural Manual of the Codex Alimentarius Commission (Codex Procedural Manual). Specific risk analysis principles have been established and documented for a range of Codex Committees, including the Codex Committee on Pesticide Residues (CCPR). The risk analysis principles applied by CCPR clarify the roles of CCPR as the risk manager and the Joint FAO/WHO Meeting on Pesticide Residues (JMPR) as the risk assessor.

The CCPR's primary objective is to recommend maximum residue limits (MRLs) for adoption by CAC based on JMPR recommendations. Codex MRLs help facilitate international trade of food and feed that may contain pesticide residues while protecting consumers' health by ensuring that such residues are safe for human consumption.

CCPR recognizes the contribution of scientific data as crucial for the elaboration of Codex MRLs. Scientific data submitted for evaluation of pesticide residues must meet the requirements set by JMPR and be in accordance with the FAO Manual ["Submission and evaluation of pesticide residues](#)

[data for the estimation of maximum residue levels in food and feed"](#).

Both Codex Members and international organizations that have been granted observer status in the Codex, including pesticide manufacturers through their affiliation to the relevant observer organization (e.g., CropLife International), can make nominations for the priority list of pesticides for evaluation by the JMPR. Nominations for the priority list cover specific combinations of compounds and commodities (i.e., food or feed), and multiple commodities can be nominated for each compound. Nominations should be made well in advance, typically around 4–5 years for a new compound and 2–3 years for new uses, ahead of the intended evaluation. The time between nomination and scheduling is usually at least three years, allowing nominators sufficient time to generate the required data package and consider adding new uses to the list of commodities for each nominated compound. The priority list, which includes nominations for future years, is the basis for establishing the JMPR assessment schedule. This process ensures that the annual JMPR assessment schedule is developed in an equitable and transparent manner.

This handbook outlines how countries can propose a pesticide/commodity combination to CCPR for establishing Codex MRLs along with practical tips for successful submission.

¹ Although Codex MRLs serve as internationally recognized reference limits, national or regional jurisdictions may apply differing requirements. Users are encouraged to verify market-specific MRLs with the respective competent authorities.

Process for proposing a pesticide/commodity combination

Establish an electronic Working Group

Codex Committee on Pesticide Residues (CCPR) establishes an electronic Working Group (eWG) on Priorities to review the schedules and priority lists of pesticides for evaluation by the Joint FAO/WHO Meeting on Pesticide Residues (JMPR). This includes an 'Invitation to participate in the eWG on Priorities' that is distributed by the Codex Secretariat. The eWG is usually established within a month after the completion of the CCPR meeting.

eWG

Sept

Participation of the electronic Working Group

All eWG participants can nominate pesticide/commodity combinations for inclusion in the priority lists and provide comments on schedules and priority lists via the Codex Online Commenting System (OCS). Codex Members and Observers must always accompany their submission with a firm commitment to provide the required data for evaluation by JMPR.

Oct-Dec

Circular Letter

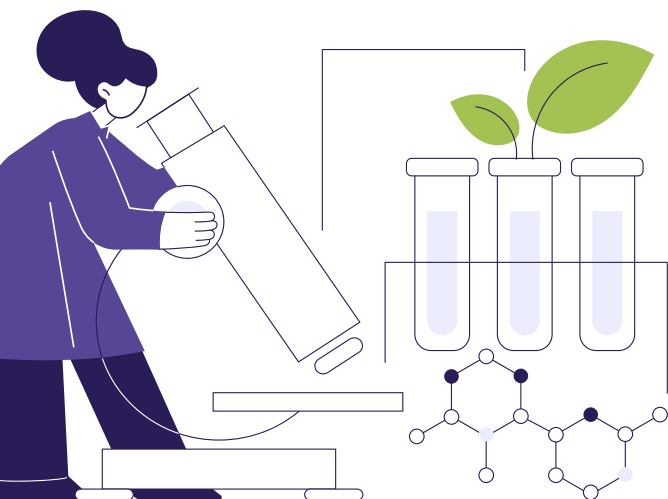
The Codex Secretariat circulates a Circular Letter (CL) to Codex Members and Observers, inviting them to comment on the tentative priority list (for the upcoming year) on further nominations. The CL is usually distributed early in the year following the last meeting of CCPR.

Jan-Mar

Electronic Working Group Chair Review

Once comments are received, the eWG, in consultation with JMPR secretariat, reviews the tentative work plan based on the comments received. The tentative schedules and priority lists are then submitted to CCPR for review during the plenary session.

Mar-Apr



Process for proposing a pesticide/commodity combination

(Cont.)

Codex Committee on Pesticide Residue Plenary

During the plenary, CCPR discusses the tentative schedules and priority lists of pesticides and finalizes the Schedule for evaluation by JMPR in the upcoming year work plan, which is subsequently submitted to the Codex Alimentarius Commission (CAC) for adoption as new work. This will lay the basis of the agenda for JMPR at its next year meeting following adoption by CAC.

May–Jun

Codex Alimentarius Commission adoption

The Schedule for evaluation by JMPR in the upcoming year is submitted to CAC for adoption as new work.

Nov

Call for Data

Once adopted by CAC, the JMPR Secretariat issues a Call for Data for submission. In response, Codex Members and Observers, chemical manufacturers, (i.e. the sponsors or data submitters) lodge data packages.

Dec

JMPR evaluation

JMPR then evaluates the data, holds discussions on draft appraisals and evaluation monographs, and prepares a final report and monograph with recommended Maximum Residue Levels (MRLs) for consideration by CCPR.

Jan–Sept

Annex I of the JMPR report listing the MRLs for the different combinations of compound/commodities is distributed for comments through a CL by the Codex Secretariat. This CL also contains references to questions put forward by the JMPR in their report which may envisage the submission of additional data that will enable JMPR to complete the evaluation. Members and Observers who participated in the establishment of the priority list should pay attention to this CL to identify potential problems with their nominations to come prepare to consider the MRL(s) in plenary.



Notes:

The time between nomination and scheduling is typically at least three years, allowing prospective nominators sufficient time to generate the required data package and consider adding new uses to the commodity list.

The timeline provided in this flowchart serves as a general guide. The exact timing of each step may vary from year to year due to factors such as the scheduling of CCPR and CAC sessions, the availability of the eWG Chairperson, and the workflow of the Codex Secretariat in processing nominations and related tasks.

Guidelines for countries submitting data

A country that is interested in nominating a new use (or new uses) and submitting data (focusing on supervised residue trial data) should consider the following:

1. Planning the submission



Determine national priorities for new pesticide/commodity MRLs, including the existing MRLs that are in the list of periodic reviews or scheduled for revocation.



Review the information available in the Priority List and Schedule (PL&S) tables, and discuss priorities with, but not limited to, the relevant manufacturer, original sponsor, and, if possible, regional colleagues.



Explore a regional approach to strengthen support and resource-sharing.

2. Nomination process

The process described below applies to the most common scenario for Codex Members that are requesting additional MRLs for existing compounds as “new uses.”



Determine the timeframe for generating the required data package and coordinate with the manufacturer, JMPR Secretariat, and regional colleagues who may share the same interest on the compound.



Submit nominations for new use(s) (pesticide/commodity MRLs) to the Priority List as soon as practicable through the Codex online commenting system (OCS) in consultation with the Chairperson of the eWG on Priorities as early as possible.



The earliest nomination practicable allows for the longest period of time listed on the Priority List, which improves the chances of support from like-minded member countries.



Ensure the proposed new use(s) has a national registered use or an approved product label. If not, discuss registration strategies with the manufacturer, original sponsor and JMPR. Explore a regional approach to strengthen the proposal.



To secure a place on the schedule, provide documented evidence of a registered use/ authorized formulation labels/Good Agricultural Practices (GAP), or at least evidence of data submission to a national regulatory authority to obtain a registration/authorized formulation label/GAP before the CCPR meeting.²

² As there is a high workload on JMPR experts, if the number of nominated compounds exceeds JMPR's maximum evaluation capacity, only the first set of compounds meeting all requirements will be scheduled for evaluation. Those exceeding the limit will be assigned a RESERVE status. Therefore, nominators and manufacturers are encouraged to submit evidence of national registrations and product labels as soon as practicable.

3. Conducting residue trial



Review the FAO Manual “Submission and evaluation of pesticide residues data for the estimation of maximum residue levels in food and feed” to ensure compliance with JMPR data requirements.



Determine the requisite data package for the new use (pesticide/commodity MRL).



Consult with the JMPR Secretariat, as appropriate, to determine expectations regarding data package requirements including supervised residue trials, minimum trial numbers, selecting trials that reflect the critical GAP (cGAP), good laboratory practice (GLP), analytical methodology, sample integrity and sample size.

4. Data submission



Submit data in response to the Call for Data issued by the JMPR Secretariat.



Maintain communication with the JMPR Secretariat.



Provide additional information if requested.



5. Revocation of Codex MRLs



Carefully review the proposed or draft MRLs, as some MRLs important to your country may be considered for withdrawal.



Understand how the four-year rule (Risk Analysis Principles applied by CCPR) applies to allow sufficient time to generate supporting data.

6. Additional tips for a successful submission



Coordination, cooperation and networking are essential to ensuring that all Codex members and delegates can meet the key objectives of the Codex and CCPR.



Generating supervised residue trial data is costly – where possible, collaborate with other countries in the region or adopt a regional approach, as appropriate.



Seek guidance from key stakeholders: the JMPR Secretariat, the Codex Secretariat, the Chairperson of the eWG on Priorities, and the Regional Coordinator. They are available to support and advise Member Countries throughout the process.

Acknowledgements

The Food and Agriculture Organization of the United Nations (FAO) would like to express its sincere appreciation to all those who contributed to the development of this handbook. It was prepared by Ian Reichstein and Panpilad Saikaew under the overall direction of Sridhar Dharmapuri.

Special appreciation is extended to James Deller, Chairperson of the electronic Working Group on Priorities, for providing valuable input throughout the process. Gratitude is also due to FAO colleagues Gracia Brisco and Guibiao Ye for their thoughtful peer review.

This work was made possible through the generous support of the FAO regional project (GCP/RAS/278/JPN), with funding provided by the Ministry of Agriculture, Forestry and Fisheries (MAFF), Government of Japan.

Required citation:

Reichstein, I. and Saikaew, P. 2026. *Proposing new compounds and additional pesticide/commodity combinations to establish Codex Maximum Residue Limits – A practical handbook*. Bangkok, FAO.

The designations employed and the presentation of material in this information product do not imply the expression of any opinion whatsoever on the part of FAO concerning the legal or development status of any country, territory, city or area or of its authorities, or concerning the delimitation of its frontiers or boundaries. Dashed lines on the map(s) represent approximate border lines for which there may not yet be full agreement.

The views expressed in this information product are those of the author(s) and do not necessarily reflect the views or policies of FAO.

Regional Office for Asia and the Pacific
39 Phra Atit Road, Bangkok, Thailand
FAO-RAP@fao.org
fao.org/asiapacific
X: @FAOAsiaPacific

Food and Agriculture Organization of the United Nations
Bangkok, Thailand



Some rights reserved. This work is made available under the Creative Commons Attribution - 4.0 International licence ([CC BY 4.0](https://creativecommons.org/licenses/by/4.0/)).

Illustrations: ©FAO